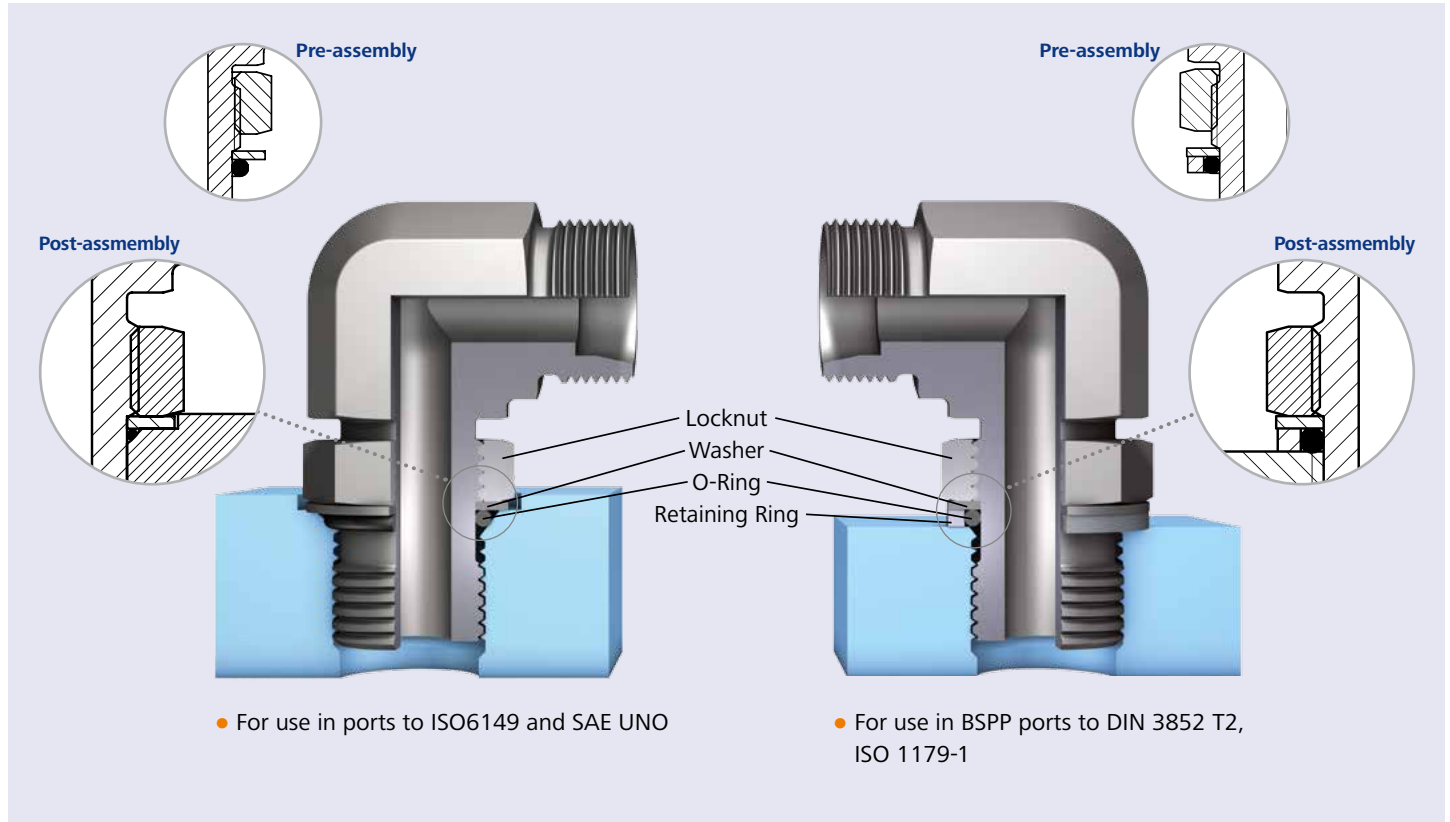


Make better connections!

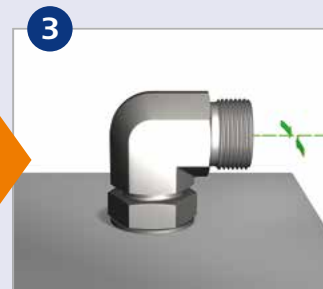
Adjustable fitting with locknut (i.e. WEE, VEE, TEE, LEE)



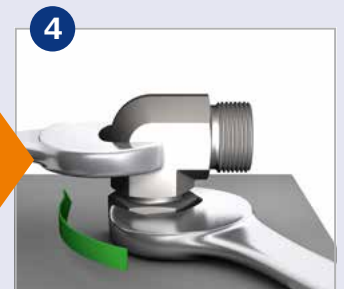
- 1
- Ensure that the Locknut, O-Ring and washer are fully raised.
 - Lubricate O-Ring
 - In the case of BSPP ports, ensure retaining ring is in place



- 2
- Insert fully into port.



- 3
- For directional alignment, unwind no more than 359°



- 4
- Tighten locknut using two spanners