



## Make better connections!

Assembly of Volz Tube fittings do follow the same procedure every time



### 1. Tube preparation

- Pay attention to cutting and deburring the tubes properly
- Check recommendations for min straight tube length
- Use inserts where necessary



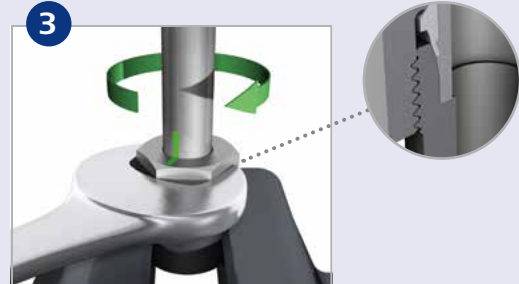
### 2. Material combinations

- Select tube fitting material in accordance to the application



### 3A. Machine driven assembly

- Preferred method
- Most economic and reliable method
- Recommended for large tube sizes (stainless steel tube OD >18mm)



### 3B. Direct assembly

- Simple assembly for low qty's at small sizes
- Not economic and reliable for mass production
- For repair purpose
- Stainless cutting ring fittings have to be pre assembled



### 4. Checking assembly results

Check each connection. Assemblies with malfunctions have to be corrected or scraped



### 5. Installation

- Final assembly in accordance to assembly instruction
- Stress free routing
- Use fix points
- Tube clamps to be tightened after assembly to avoid misalignment and stress